

## VERTICAL CENTRIFUGAL MULTISTAGE PUMPS

Vertical centrifugal multistage pumps suitable for pressure boosting systems, car washing, irrigation and general clean water pumping. Reliable and noiseless pumps.



### SPECIFICATIONS

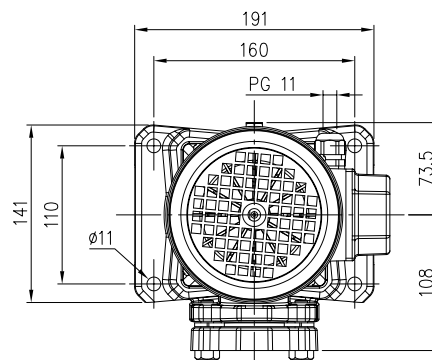
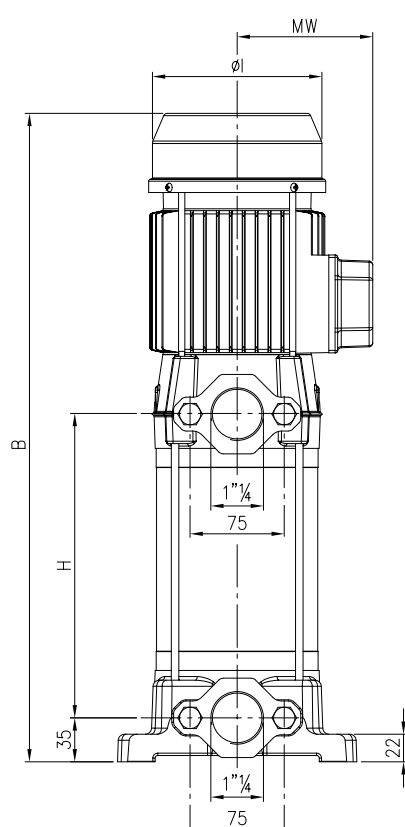
- Maximum working pressure: 11 bar
- Maximum liquid temperature: 40°C

### MATERIALS

- Pump body and bracket in cast iron
- External casing in AISI 304
- Impeller and diffuser in PPO mod. glass fibre reinforced
- Shaft in AISI 416
- Mechanical seal in carbon/ceramic/NBR

### TECHNICAL DATA

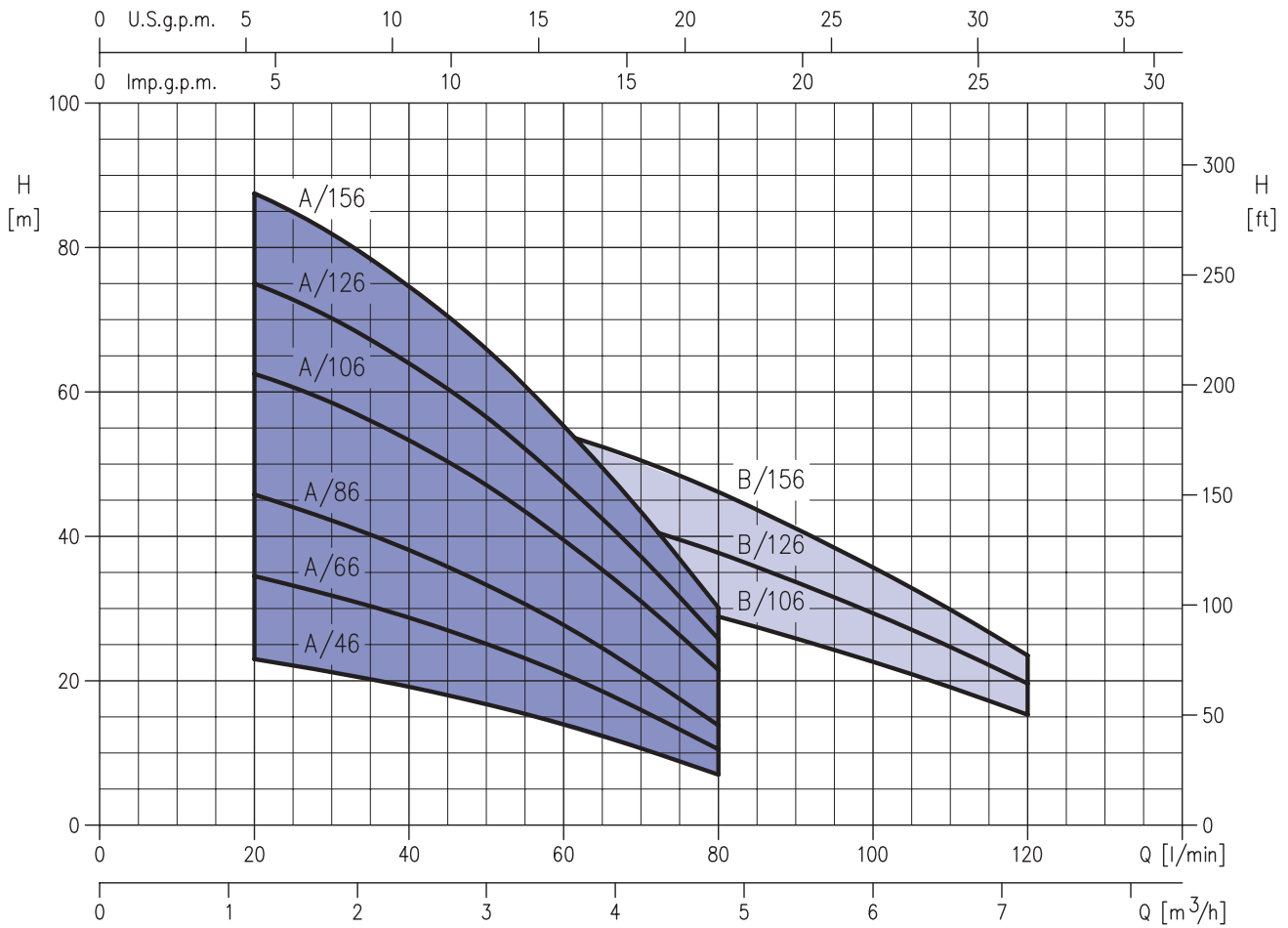
- Asynchronous 2 poles motor
- Insulation class F
- Protection degree IP 44
- Single-phase standard voltage: 220-230V ±6%
- Three-phase standard voltage: 220/380V -6% +10%
- Permanent split capacitor and automatic thermal overload protection for single-phase version
- Thermal protection to be provided by the user for three-phase version
- DNM – DNA 1<sup>1/4</sup>



### DIMENSIONAL TABLE

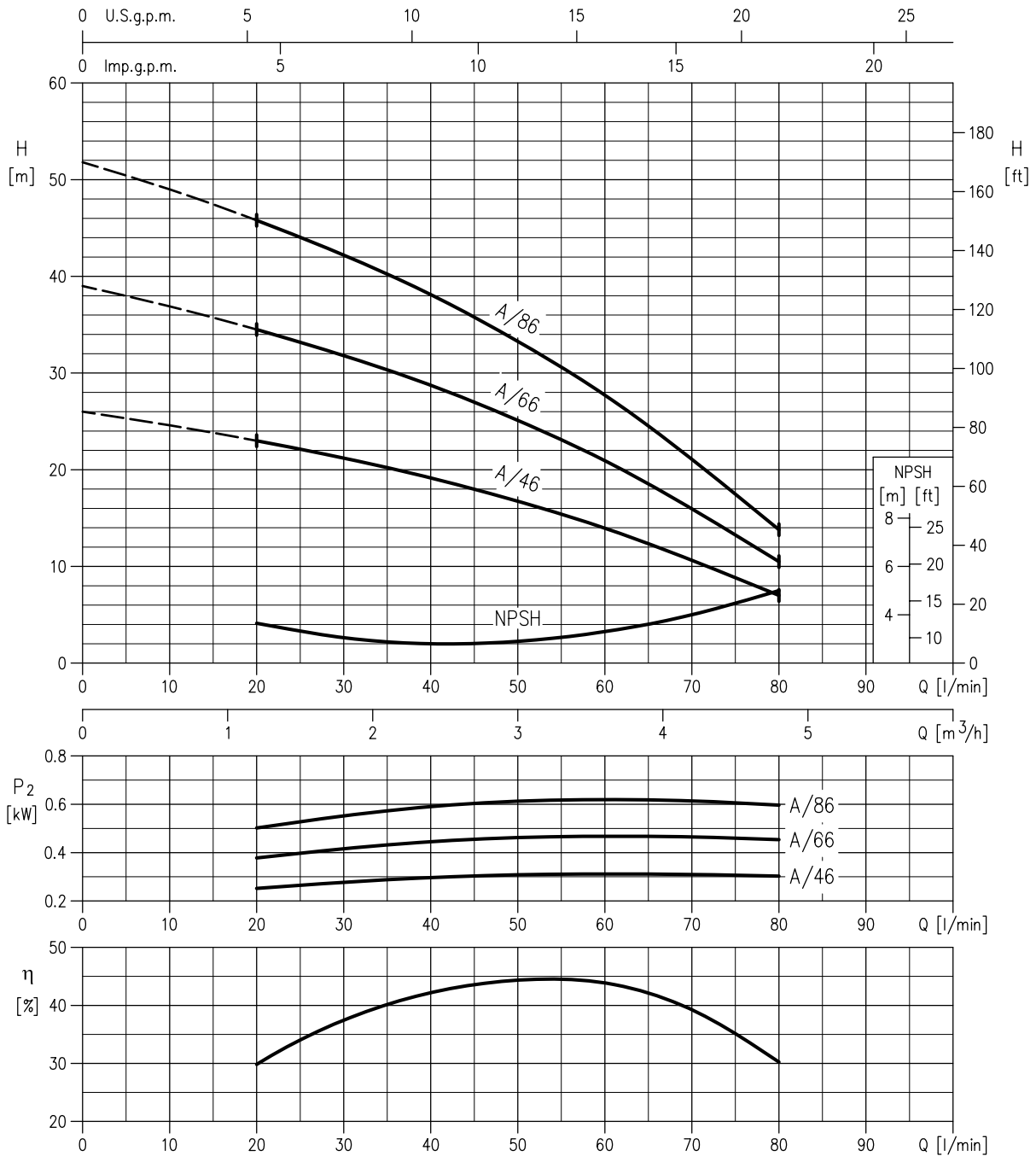
| Pump type | Motor Size | Dimensions [mm] |     |     |        | Weight [kg] |      |      |
|-----------|------------|-----------------|-----|-----|--------|-------------|------|------|
|           |            | B               | H   | ØI  | MW [1] | MW [2]      | [1]  | [2]  |
| CVM A/46  | 63         | 336             | 112 | 116 | 101    | 91,5        | 11,0 | 11,0 |
| CVM A/66  |            | 362             | 138 |     |        |             | 11,7 | 11,6 |
| CVM A/86  |            | 388             | 164 |     |        |             | 12,7 | 12,6 |
| CVM A/106 | 71         | 452             | 190 | 137 | 110,5  | 101         | 16,5 | 16,6 |
| CVM A/126 |            | 478             | 216 |     |        |             | 17,5 | 17,6 |
| CVM A/156 |            | 517             | 242 |     |        |             | 18,5 | 18,6 |
| CVM B/106 |            | 400             | 138 |     |        |             | 15,9 | 15,9 |
| CVM B/126 |            | 426             | 164 |     |        |             | 16,8 | 16,7 |
| CVM B/156 |            | 465             | 190 |     |        |             | 18,0 | 17,9 |

[1] Single phase  
[2] Three phase

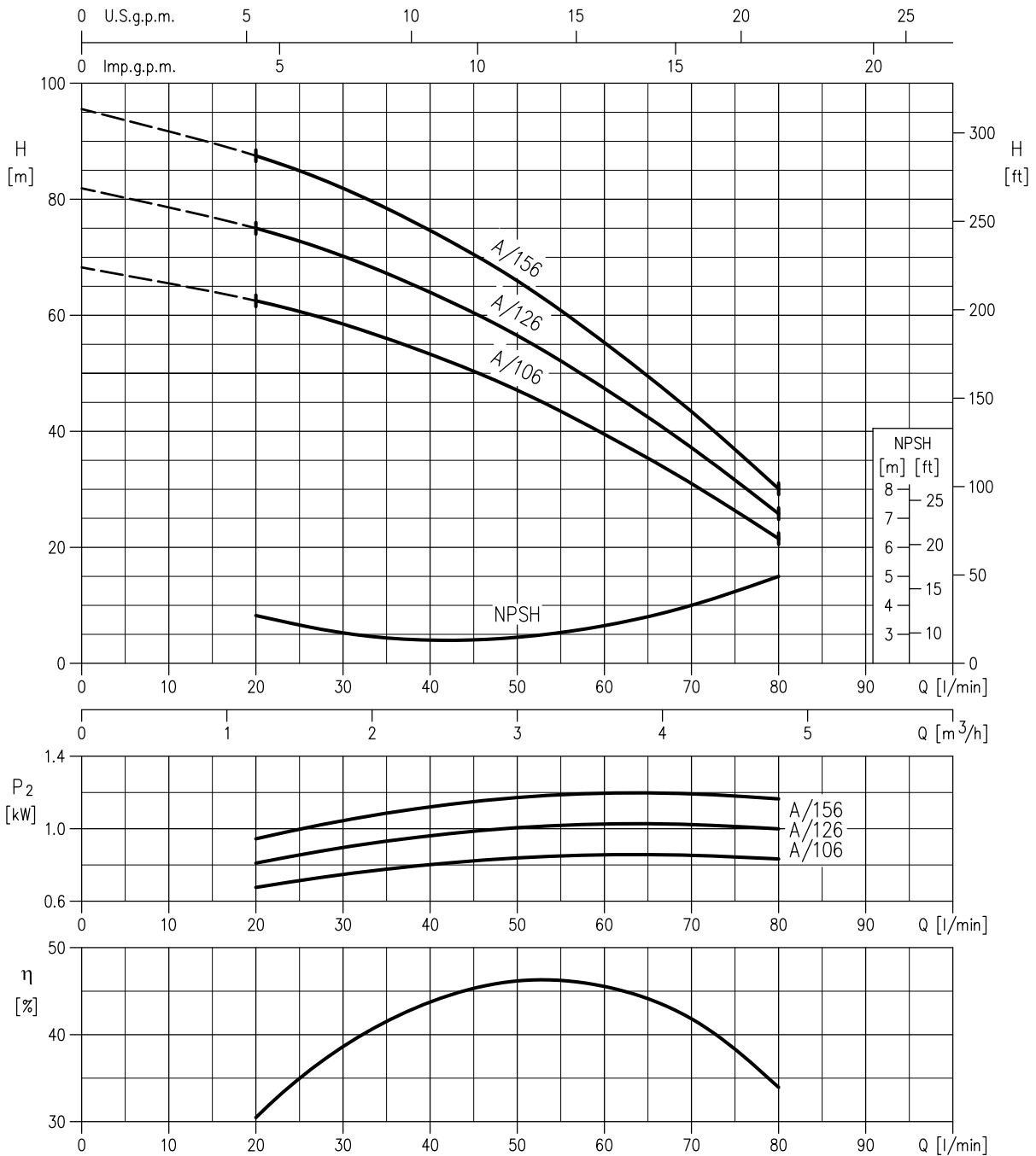
**PERFORMANCE CURVES** (according to ISO 9906 Annex A)

**PERFORMANCE TABLE**

| Pump type                         |             | Output |     | Absorbed current [A] |             |      | Q=Capacity |      |      |      |      |      |      |      |      |  |
|-----------------------------------|-------------|--------|-----|----------------------|-------------|------|------------|------|------|------|------|------|------|------|------|--|
| Single-phase                      | Three-phase | kW     | HP  | Single-phase         | Three-phase |      | l/min      | 20   | 30   | 40   | 50   | 60   | 80   | 100  | 120  |  |
|                                   |             |        |     |                      | 220V        | 380V | 0          | 1,2  | 1,8  | 2,4  | 3,0  | 3,6  | 4,8  | 6,0  | 7,2  |  |
| H=Total manometric head in meters |             |        |     |                      |             |      |            |      |      |      |      |      |      |      |      |  |
| CVM AM/46                         | CVM A/46    | 0,3    | 0,4 | 2,9                  | 1,6         | 0,9  | 26         | 23   | 21,2 | 19,2 | 16,7 | 14   | 7    | -    | -    |  |
| CVM AM/66                         | CVM A/66    | 0,44   | 0,6 | 3,5                  | 2,1         | 1,2  | 39         | 34,5 | 31,8 | 28,7 | 25,1 | 20,9 | 10,5 | -    | -    |  |
| CVM AM/86                         | CVM A/86    | 0,6    | 0,8 | 4,3                  | 2,4         | 1,4  | 52         | 45,6 | 42,2 | 38,1 | 33,3 | 27,7 | 13,8 | -    | -    |  |
| CVM AM/106                        | CVM A/106   | 0,75   | 1,0 | 6,7                  | 3,6         | 2,1  | 68,5       | 62,5 | 58,5 | 53,3 | 47,1 | 39,5 | 21,5 | -    | -    |  |
| CVM AM/126                        | CVM A/126   | 0,9    | 1,2 | 7,0                  | 4,3         | 2,5  | 82         | 75   | 70,2 | 64   | 56,5 | 47,4 | 25,8 | -    | -    |  |
| CVM AM/156                        | CVM A/156   | 1,1    | 1,5 | 7,5                  | 4,8         | 2,8  | 85,5       | 87,5 | 81,9 | 74,6 | 65,9 | 55,3 | 30,1 | -    | -    |  |
| CVM BM/106                        | CVM B/106   | 0,75   | 1   | 6,4                  | 3,3         | 1,9  | 39,6       | -    | 37,8 | 36,8 | 35,4 | 33,7 | 28,9 | 22,6 | 15,3 |  |
| CVM BM/126                        | CVM B/126   | 0,9    | 1,2 | 6,8                  | 4,2         | 2,4  | 52         | -    | 49,5 | 48,2 | 46,4 | 44,1 | 37,7 | 29,4 | 19,6 |  |
| CVM BM/156                        | CVM B/156   | 1,1    | 1,5 | 7,4                  | 4,8         | 2,8  | 64         | -    | 61   | 59,3 | 57   | 54,1 | 46,2 | 35,7 | 23,5 |  |

**PERFORMANCE CURVES CVM A/46 - A/66 - A/86** (according to ISO 9906 Annex A)



**PERFORMANCE CURVES CVM A/106 - A/126 - A/156** (according to ISO 9906 Annex A)



**PERFORMANCE CURVES CVM B/106 - B/126 - B156** (according to ISO 9906 Annex A)

